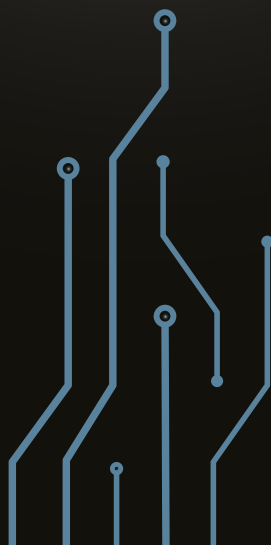
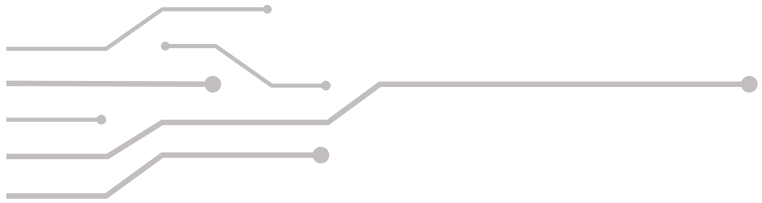




PRECISION
—
TUBES



CONTENTS

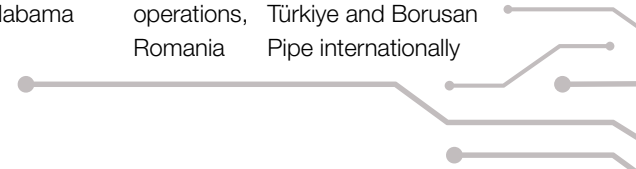


Milestones	2
Borusan Holding at a Glance	4
Borusan Pipe in Brief	5
Global Presence	6
Your Total Solution Provider	8
QEHS Management	10
Standards & Certificates	12
Automotive Tubes	14
Hydraulic Applications	16
Industrial Applications	18
Production Ranges	20
Further Processing	24



MILESTONES








1944	1958	1968	1969	1976	1979	1994	1998	2001	2004		2009	2011	2014	2016	2019	2023	2024	2024
Foundation of Borusan	Borusan Boru was founded	Halkali ERW Pipe Plant started production, İstanbul	First exports	Gemlik ERW Pipe Plant started production, Bursa	Borusan Port inagurated	Borusan Boru quoted on İstanbul Stock Exchange	Borusan and Mannesmann merged their pipe business activities in Türkiye	Acquisition of cold drawn pipe plant in Vobarno, Italy	The company name is amended as "Borusan Mannesmann"		Borusan Port expansion completed	Gemlik HSAW Pipe Plant started production, Bursa	Baytown ERW Plant started production, Texas	Bursa Service Center started operations, Bursa	Gemlik Automotive Tubes Plant started production, Bursa	Acquisition LSAW pipe plant in Florida and HSAW pipe plant in Alabama	Baytown SRM Plant & Ploiești Service Center started operations, Romania	Borusan and Salzgitter Mannesmann partnership has ended. The name of the company has changed as Borusan Boru in Türkiye and Borusan Pipe internationally



BORUSAN HOLDING AT A GLANCE

BORUSAN GROUP'S BASIC STRATEGY IS BASED ON A VISION THAT FOCUSES ON DEVELOPING INNOVATIVE PRODUCTS AND SERVICES WHILE CONTINUING TO CREATE ADDED VALUE FOR THE TURKISH ECONOMY, WITH AN OPEN HORIZON TO WORLD MARKETS.

Celebrating its 80th anniversary in 2024, Borusan Group continues its steady growth in manufacturing, machinery and power systems, automotive, logistics and energy sectors in different markets around the world, especially in Türkiye.

<p>PRODUCTION GROUP</p> <p>Borusan Pipe Borçelik Supsan</p> 	<p>LOGISTICS GROUP</p> <p>Borusan Logistics Borusan Port</p> 
<p>AUTOMOTIVE GROUP</p> <p>Borusan Automotive Group Parcapazari.com</p> 	<p>ENERGY GROUP</p> <p>Borusan EnBW Enerji</p> 
<p>MACHINERY AND POWER SYSTEMS GROUP</p> <p>Borusan CAT</p> 	<p>BUSINESS PARTNERS</p> <p>ArcelorMittal EnBW GIWA</p> 
<p>BRANDS</p> 	

BORUSAN PIPE IN BRIEF

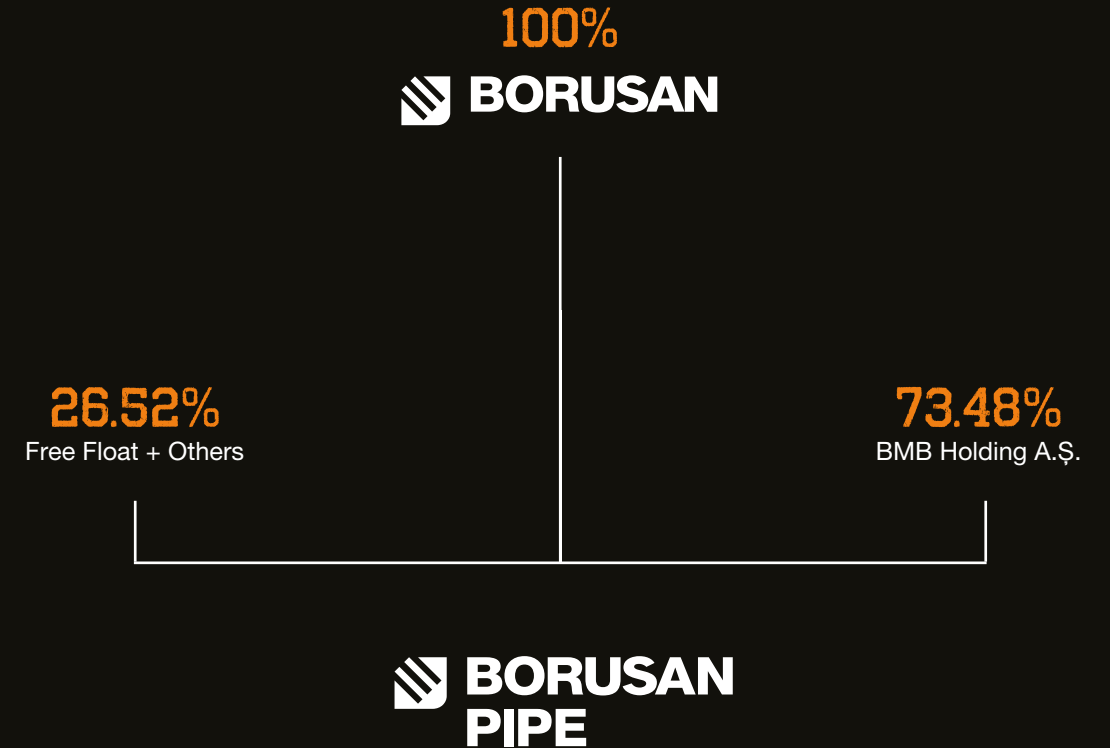
"BORUSAN PIPE IS AMONG THE LEADING MANUFACTURER OF STEEL PIPES IN THE WORLD."

Founded in 1958, Borusan Pipe is the first industrial initiative of the Borusan Group, one of Türkiye's leading powers. Today, Borusan Pipe carries its experience, expertise, and passion to all corners of the world with its high-tech pipes in every field, from automotive to construction, from energy to machinery production, with its high sales volume, and is among the leading manufacturers of Europe and the world in the steel pipe industry.

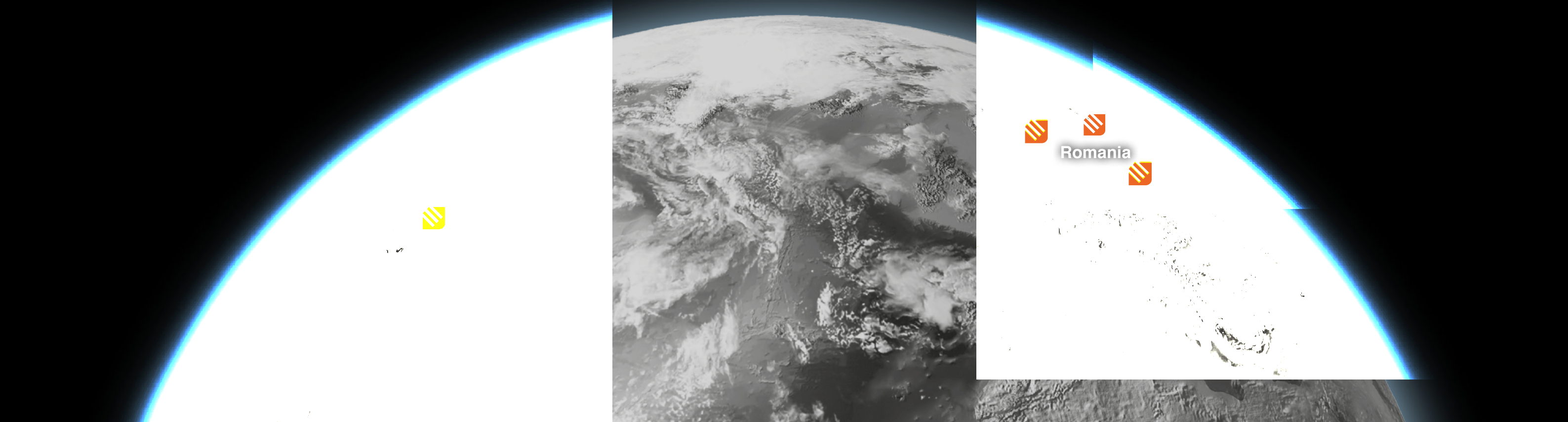
Continuing its investments with a global perspective in line with market dynamics, the company. It's first overseas investment by establishing Borusan Vobarno Tubi S.p.A. with the facility it purchased in Italy in 2001. In 2014, it founded Borusan Pipe US Inc. to manage the Houston Baytown factory investment in the USA. In 2023, within the scope of its strategy of becoming a local player in global markets, it purchased Berg Pipe, one of the companies in the USA that produces the highest quality and capacity, and incorporated it as Borusan Berg Pipe.

In 2024, with its investment, it opened the Ploiești Service Center in Romania, which has a production and storage area of 4800m², and started the production of over 10,000 tons of short-cut shock absorber tubes.

Borusan Pipe, in the top 100 in the list of Türkiye largest industrial enterprises since its first year, is building Türkiye future beyond producing pipes with its thousands of products, reliable service, quality, and the firsts it has achieved in Türkiye and the world. It offers a sustainable society and world with its management policies, and a developed country, and a safe future with its large-scale investments.



BEYOND BORDERS, BEYOND EXPECTATIONS



Italy

Vobarno Plant

Sectors served : Engineering Technologies
 Workforce : 90
 Area : 24.000 m²

Romania

Ploiești Service Center

Sectors served : Automotive
 Expected workforce till 2026 : 62
 Area : 4.800 m²

USA

Baytown ERW Plant

Sectors served : Energy Sector
 Workforce : 300
 Area : 500.000 m²

Türkiye

Gemlik Automotive Tubes Plant

Sectors served : Automotive and Engineering Technologies
 Workforce : 50
 Area : 20.000 m²

Halkalı Plant

Sectors served : Engineering Technologies
 Workforce : 80
 Area : 67.000 m²

USA

Baytown SRM Plant

Sectors served : Water Transmission
 Workforce : 85
 Area : 15.000 m²

USA

Borusan Berg Pipe Panama City LSAW Pipe Plant

Sectors served : Energy Sector
 Workforce : 171
 Area : 28.600 m²

USA

Borusan Berg Pipe Mobile HSAW Pipe Plant

Sectors served : Energy Sector
 Workforce : 99
 Area : 30.800 m²

Bursa Service Center

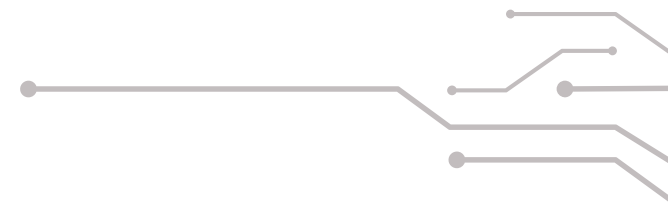
Sectors served : Automotive
 Workforce : 300
 Area : 24.000 m²

Gemlik ERW Pipe Plant

Sectors served : Energy, Construction, Water Transmission
 Workforce : 750
 Area : 388.000 m²

Gemlik HSAW Pipe Plant

Sectors served : Energy, Construction, Water Transmission
 Workforce : 140
 Area : 70.000 m²



YOUR TOTAL SOLUTION PROVIDER; BORUSAN PIPE



EXCEEDING LIMITS WITH CONTINUOUS R&D

Borusan Pipe's research and development philosophy enables us to carry out research activities in all markets and develop new products for our customer's and market needs. As Borusan Pipe; we also conduct joint projects with our raw material suppliers to develop special material qualities for the manufacture of desired products. We collaborate in performing trial productions and troubleshooting activities to maintain excellence in product and process design and implementation to the best possible extent.

As a company that embraces Lean 6 Sigma methodology; launching breakthrough technologies, improving production and process control steps is a part of our daily life.

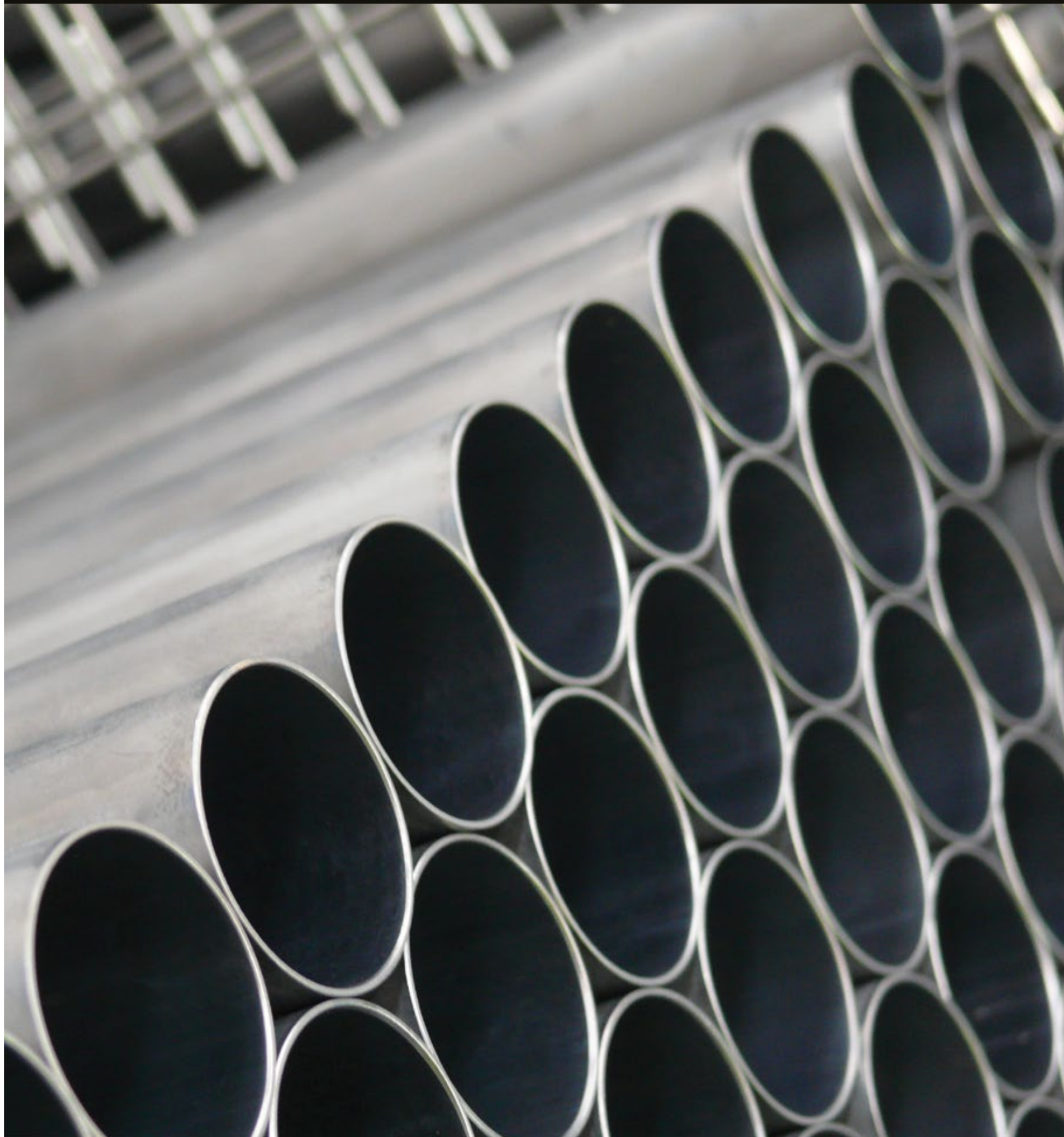
VOC - MOST VALUABLE DRIVING FORCE

Borusan Pipe has been capturing the requirements and feedback of our customers to provide the best product and service quality. We have been applying the VOC - Voice of Customer process since 2003. Serving to our customers and delivering synergetic solutions in the most cost effective way is a consistent discipline in Borusan Pipe. We aim to compose personal recipes for special market needs. This approach leads us to go beyond ourselves and present valuable services for our customers.

WELL ESTABLISHED SALES ORGANIZATION

Borusan Pipe's sales experts provide fast response and reliable technical consultation in close cooperation with our customers before and after the sales process. Our sales organization is made of professional local representatives who speak our customer's language in their market and always provide the best solutions for the business. Company's representatives are carefully picked from the best of highly qualified distributors in the local market. We provide the best solutions; in your country, in your language with equipped people.

QEHS MANAGEMENT



Borusan Group companies all share a common set of guiding principles, which help this vast enterprise to operate in complete harmony. These principles are commitments to productivity, innovation, and environmental responsibility.

From raw material to finished product, Borusan Pipe determines the impacts on the environment and reduce impacts control each step of the process. Our Environmental Management System Certificate (ISO 14001) proves our commitment to environment. Healthy performance is delivered through healthy people. In compliance with ISO 45001, Borusan Pipe's endeavors to protect the health and safety of its workforce and service providers. Borusan Pipe; exemplary with its modern management approach, as well as its investments, has been applying The Lean Six Sigma methodology since 2002 and Voice of Customer (VOC) process since 2003.

The Lean Six Sigma methodology is a highly disciplined business management strategy that seeks to remove the causes of defects in production and business processes, and to continuously improve productivity, profitability, and customer satisfaction. Besides with the VOC process, we capture the requirements and feedback from our customers to provide the best product and service quality.

Ongoing efforts to improve customer satisfaction brought Borusan Pipe, Complaints Handling Management Systems Certificate (ISO 10002), which is a first in the steel pipe sector globally.

Quality Management Certificates

IATF 16949 Quality Management Systems Standard For The Automotive Industry
ISO 9001 Quality Management Systems
ISO 14001 Environmental Management Systems
ISO 10002 Quality Management Systems For Customer Satisfaction
ISO 45001 Occupational Health and Safety Management Systems

Quality System Certificates



STANDARDS & CERTIFICATES



PRODUCTION STANDARDS

Welded Cold Sized Tubes : EN 10305-3
Welded Cold Drawn Tubes : EN 10305-2
Welded Cold Sized Square and Rectangular Tubes : EN 10305-5

Note: Other standards such as ASTM A513, JIS G 3445 etc. upon request

STEEL GRADES

Structural Steels : S235, S275, S355
DQ Steels : DC01, DC03, DC04
HSLA Steels : S315MC, S355MC, S420MC, S460MC, S500MC, S550MC, S600MC, S700MC
Dual Phase Steels : DP500, DP600, DP800, DP1000
Heat Treatable Steels : 20MnB5, 22MnB5, 26MnB5, 30MnB5, 34MnB5
Coated (Galvanized, aluminized) Steels : DX51, DX52, DX53, S220, S350

Note: Other grades upon request

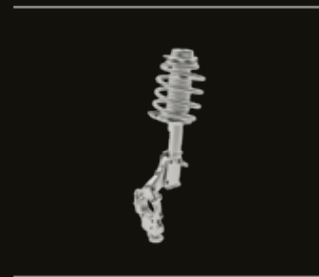
TESTS & INSPECTIONS

- Visual Examination
- Dimensional Inspection
- Metallographic Inspection
- Tensile Test
- Drift Expanding / Flaring Test
- Flattening Test
- Hardness Testing (HV, HRB, HRC)
- Ultrasonic Testing
- Flanging Test
- Chemical Analysis
- Eddy Current Testing
- Surface Roughness Measurement

INSPECTION DOCUMENTS

MTC (Mill Test Certificates) acc. to EN 10204 3.1; 2.2

AUTOMOTIVE TUBES



SHOCK
ABSORBER
TUBES



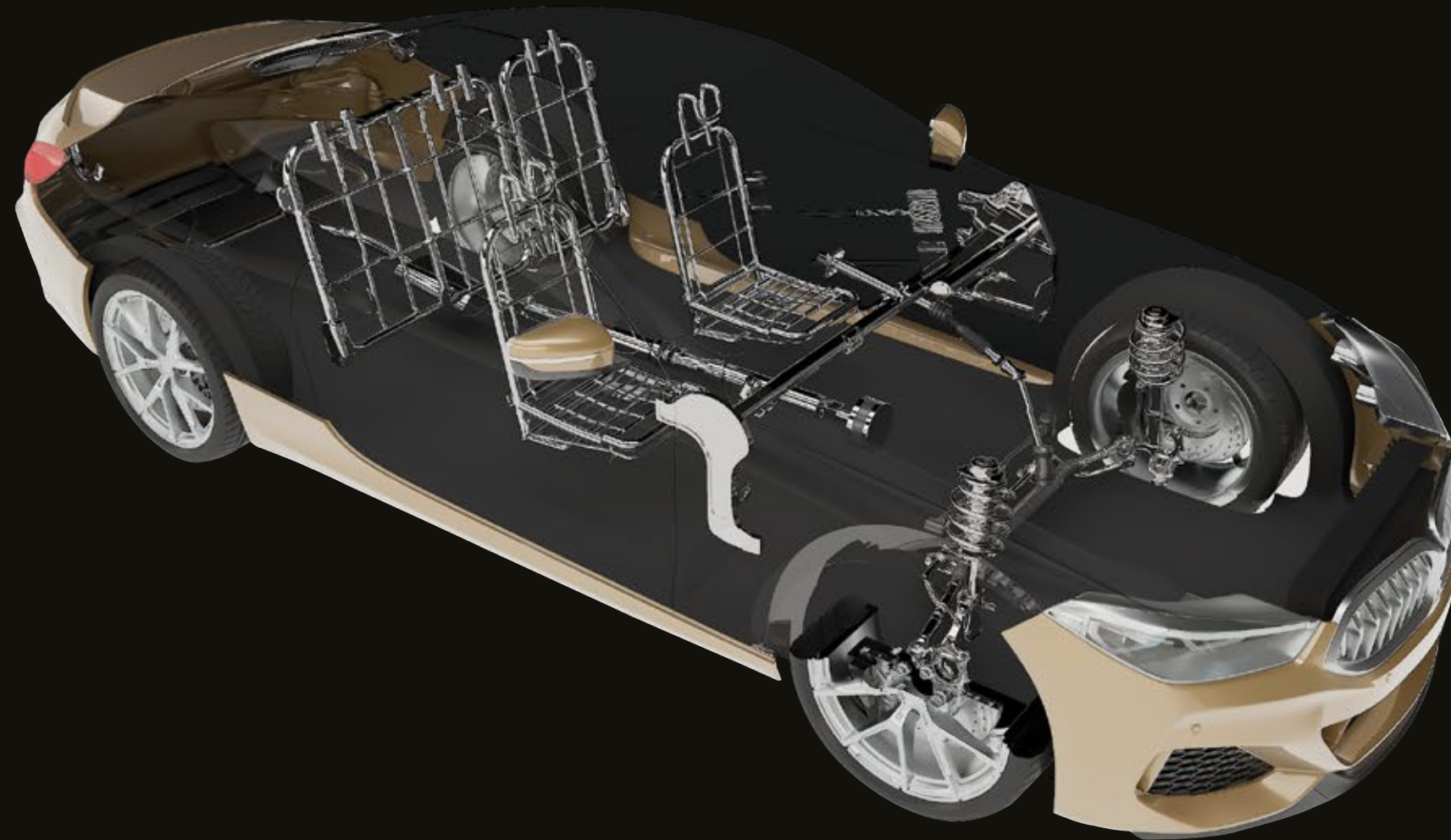
STABILIZER



STEERING
COLUMN
TUBES



TIE
ROD
TUBES



AXLE



TRUNK
HINGE



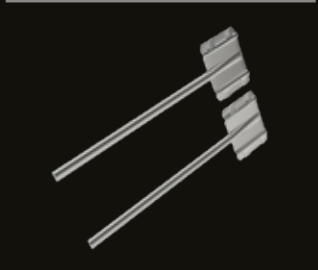
CARDAN
SHAFT
TUBES



CROSS CAR
BEAMS



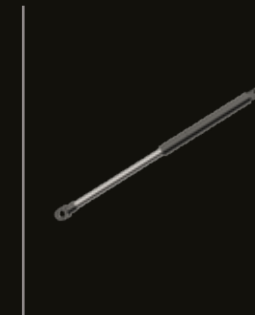
DOOR
IMPACT
BEAMS



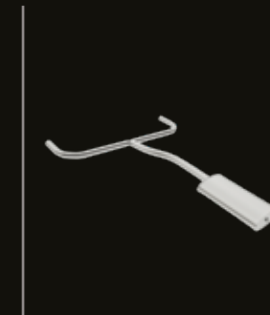
BORUSAN PIPE IS A HIGHLY RECOGNIZED MANUFACTURER FOR ITS PRODUCT AND SERVICE QUALITY IN AUTOMOTIVE INDUSTRY.

Our plants, one in Vobarno, Italy, one in Gemlik, Türkiye, one in Halkalı, Türkiye, and the last one in Ploiești, Romania, specialize in the production of value-added precision tubes used in critical vehicle components. Our sales, quality, and design teams work together to manage various technical and schematic inquiries, providing our customers with custom-made solutions.

Products are commonly used in passenger cars, light and heavy commercial vehicles which are travelling around the globe.



GAS
SPRING



EXHAUST
TUBES



FRONT SEAT
FRAME TUBES



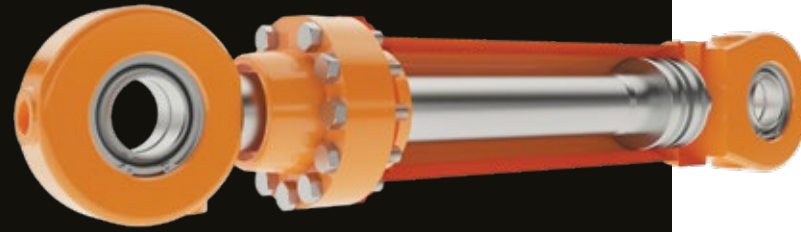
HEAD REST
TUBES



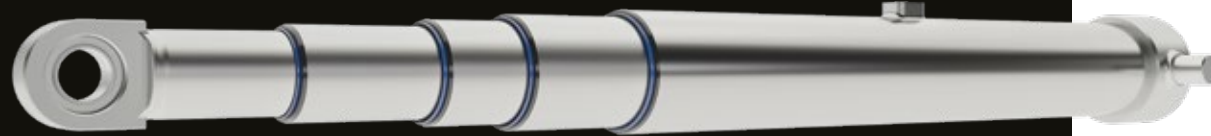
REAR SEAT
FRAME TUBES

Tubes of Borusan Pipe are used in earth moving machines, agricultural machines, trucks and several machineries. With the ability of producing ready to use tubes and suitable for honing and roller burnishing tubes, Borusan Pipe is an ideal supplier for hydraulic applications.

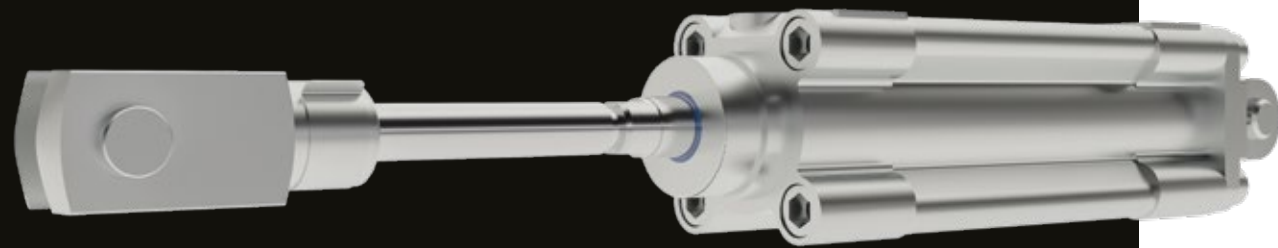
HYDRAULIC APPLICATIONS



HYDRAULIC CYLINDERS



TELESCOPIC CYLINDERS



PNEUMATIC CYLINDERS

INDUSTRIAL APPLICATIONS CUSTOM SHAPED STEEL PROFILES



Borusan Pipe manufactures custom-shaped profiles with the highest degree of functionality according to customer expectations. These custom-designed profiles are utilized in various applications across different sectors, including automotive, construction, agricultural machinery, towel rails, furniture, etc.

We supply profiles with the most accurate tolerances to meet customers' requirements and drawings. Borusan Pipe has the knowledge to select the most suitable forming technologies to meet specific requirements.

TECHNOLOGIES FOR SPECIAL SHAPE PROFILES

- Direct Roll Forming
- HFW + Cold Forming
- Forming by Cold Drawing

We are ready to produce according to different types of standards and/or customers' specialized technical requirements. Steel grades, wall thicknesses, dimensions, and tolerances may vary according to the requirements of the final product. Different pre-coated raw materials and final coating methods are available upon request.

FURTHER PROCESSING

- Length Cutting
- Bending
- Hole Drilling
- Online Die Stamping

TESTS & INSPECTIONS

- Visual Examination
- Dimensional Inspection
- Metallographic Inspection
- Tensile Test
- Chemical Analysis
- Flattening Test
- Hardness Testing (HV, HRB, HRC)
- Eddy Current Testing
- 3D Scanning

INSPECTION DOCUMENTS

- MTC (Mill Test Certificates) acc. to EN 10204 2.2, 3.1

FURTHER PROCESSING

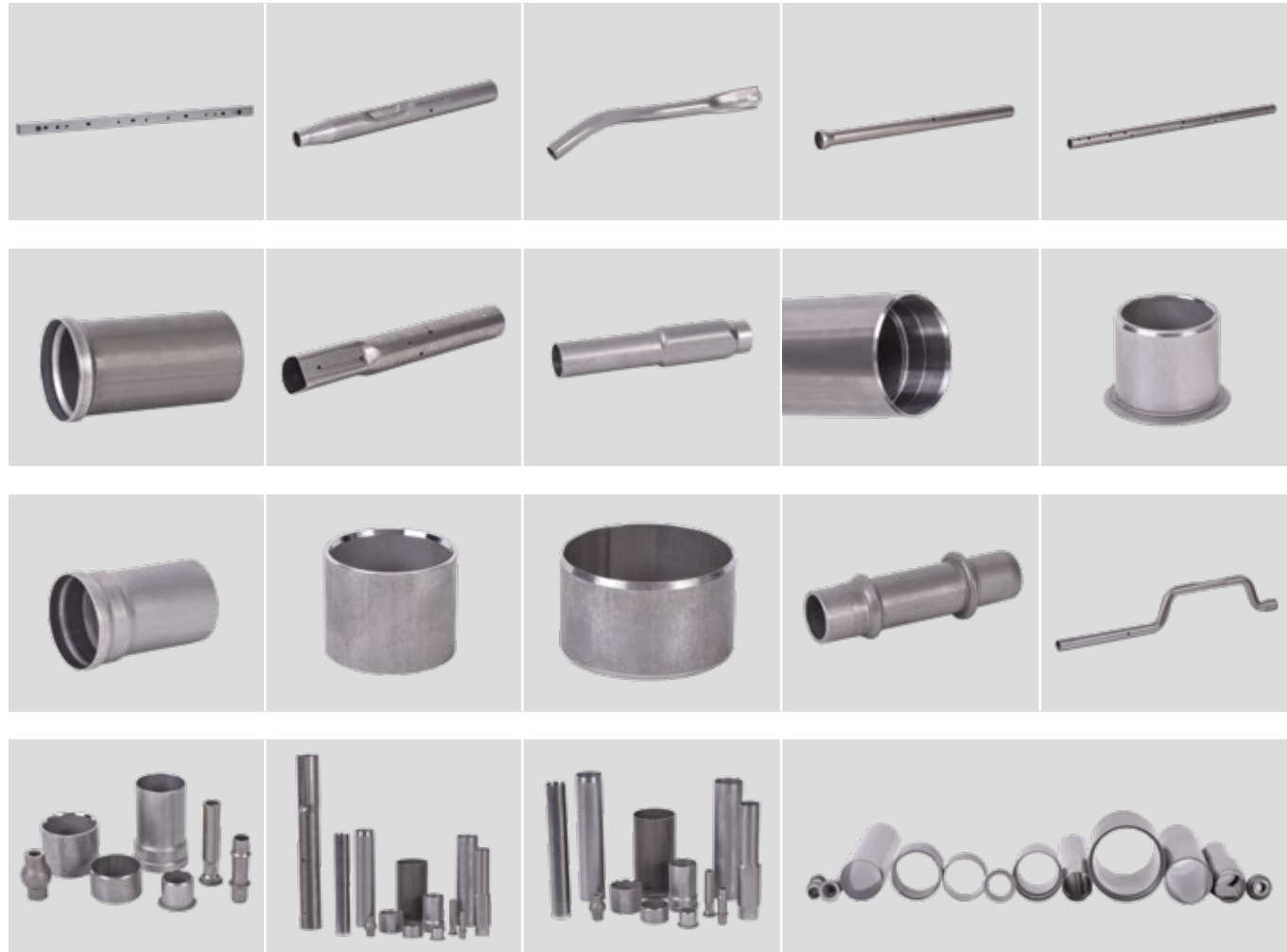
With more than 65 years of experience in tube production, we provide competitive prices in-line with the demands and special requests for both our export and domestic customers

PROVIDED SERVICES ACCORDING TO CUSTOMER SPECIFIC DEMANDS;

- Cut-to-length and emptying with laser tube cutting
- Cutting, brushing, washing (according to customer specifications)
- Double end chamfering
- Heat treatment (induction hardening)
- CNC bending
- CNC milling, CNC Turning
- Tube forming, end forming (diameter expanding, reduction, flattening,...etc.)

PACKING AND DELIVERY SERVICES;

- Loading directly into the customer strongboxes
- Packing as hexagon bundle
- Packing as square bundle
- Packing into cartoon box or wooden crate
- Packing with VCI, silica gel, jute matting, oil paper
- Protection against corrosion





www.borusanpipe.com



pipe@borusan.com



+90 (549) 393 58 00



/Borusanpipe



/Borusanpipe



/Borusanpipe



**BORUSAN
PIPE**